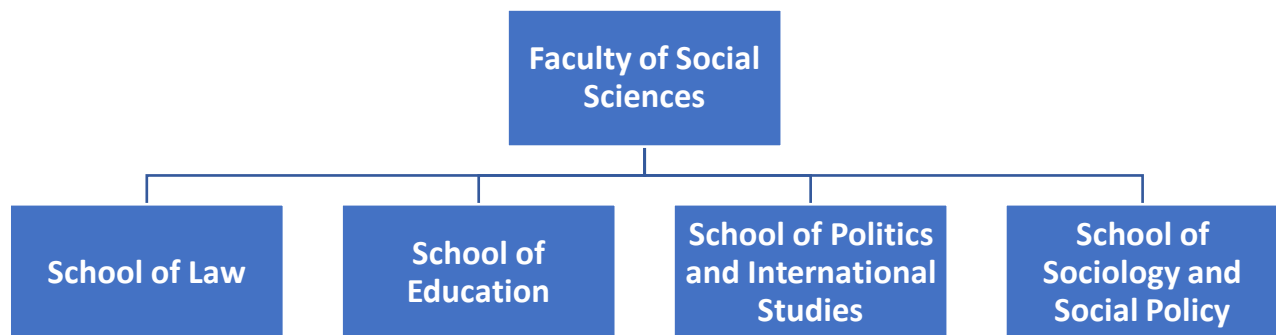


Doctoral College Handbook 2023-24: School of Politics and International Studies - Faculty of Social Sciences

Faculty and School Structure



Key staff

The School of Politics and International Studies is part of the Faculty of Social Sciences (FoSS). The Head of School is currently **Professor Richard Beardsworth**. Your best contacts for research advice from the teaching staff will usually be your supervisors, followed by the Director of Postgraduate Research Studies **Dr Helena Hinkkainen** (k.hinkkainen@leeds.ac.uk) and **Dr Gordon Clubb** (g.clubb@leeds.ac.uk).

Caroline Wise (c.wise@leeds.ac.uk) is the School Manager and **Olivia Wilson** (O.J.Wilson@leeds.ac.uk) is Executive Assistant to Head of School of Politics and International Studies, Professor Beardsworth.

The Graduate School admin team can be contacted at FoSSGradSchool@leeds.ac.uk.

Contacts

Please get in touch with your Graduate School for any queries you may have related to your time at the University. This may include questions about support services, discussing any changes you need to make to your studies, guidance and procedures, University services, etc. If you have a question and you are not sure who to ask, your Graduate School is the best place to start, and the staff will be more than happy to help with your query.

If you want to get in touch with your Graduate School, you can email them using the Graduate School office email address below. You are also welcome visit your Graduate School team in person.

Faculty Graduate School: FoSSGradSchool@leeds.ac.uk

Graduate School office location and opening hours: Graduate School offers weekly Drop-in sessions for School of Politics and International Studies PhD students every Tuesday from 11am to 1pm in the Social Sciences Building. Weekly invitations and reminders for the Drop-in sessions will be circulated via email.

Head of Graduate School: Head of Graduate School: [Professor Jen Hendry](#)

Director of Postgraduate Research Studies (DPGRS): Director of Postgraduate Research Studies **Dr Helena Hinkkainen** and **Dr Gordon Clubb**.

[Faculty and School PGR Facilities](#)

The School endeavours to provide access to a shared study space on level 9 of the Social Sciences Building for all research students up to the point of submitting their PhD thesis.