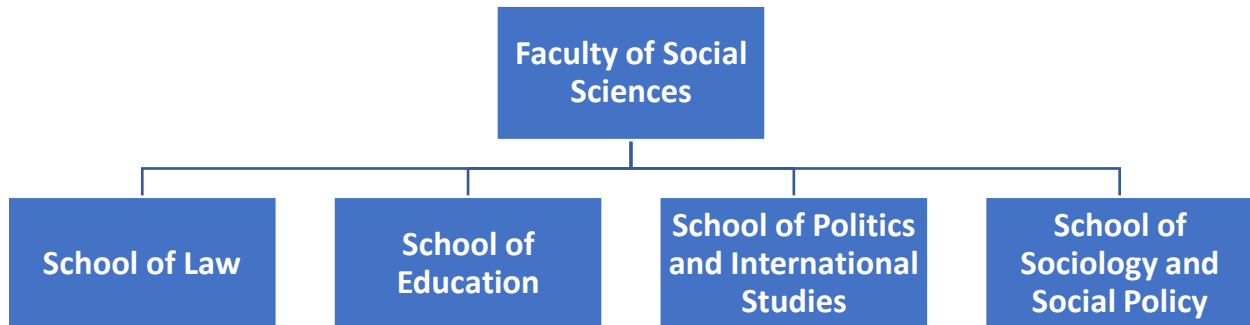


Doctoral College Handbook 2023-24: School of Law - Faculty of Social Sciences

Faculty and School Structure



Key staff

Dr Subhajit Basu

Co-Director of PGR Studies
Room G.16, The Liberty Building
S.Basu@leeds.ac.uk



Dr David Pearce

Co-Director of PGR Studies
Room 2.28a, The Liberty Building
D.Pearce@leeds.ac.uk



A LAW staff Directory is available [here](#).

Dr Sophiko (Sophia) Daraselia
Doctoral College Officer

The Graduate School admin team can be contacted at FoSSGradSchool@leeds.ac.uk



Contacts

Please get in touch with your Graduate School for any queries you may have related to your time at the University. This may include questions about support services, discussing any changes you need to make to your studies, guidance and procedures, University services, etc. If you have a question and you are not sure who to ask, your Graduate School is the best place to start, and the staff will be more than happy to help with your query.

If you want to get in touch with your Graduate School, you can email them using the Graduate School office email address below. You are also welcome to visit your Graduate School team in person.

Faculty Graduate School: fossgradschool@leeds.ac.uk

Graduate School office location and opening hours: Graduate School offers weekly Drop-in sessions every Monday from 11am to 12pm in room 1.21 in the Liberty Building. Weekly invitations and reminders for the drop-in sessions are circulated via email.

Head of Graduate School: [Professor Jen Hendry](#)

Co-Directors of Postgraduate Research Studies (DPGRS): [Dr Subhajit Basu](#) and [Dr David Pearce](#).

Faculty and School PGR Facilities

We have two PGR study rooms in the Liberty Building, on the first floor 1.15 and on the second floor, 2.46. We offer a limited number of allocated desk spaces, and we also have a number of hot-desks. Adjacent to 1.15, there is a PGR kitchen and common room and a printer.

Student support available in the School

Dr Nick Cartwright - Director of Student Success n.cartwright@leeds.ac.uk

Anna Nixon - Student Engagement & Support Team Leader a.j.a.nixon@leeds.ac.uk

The student support team are located in room G.27.

Out of hours access/safety/lone working in the School

The Liberty Building can be accessed between 6am and midnight. Access outside core hours, which are 8:00am to 6pm, is via a keyfob which can be ordered from the [online store](#).